

RETIREE

# Journal

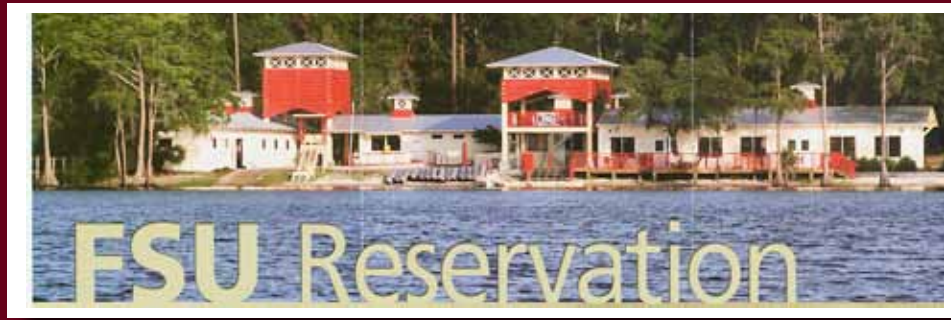


FLORIDA STATE UNIVERSITY

ASSOCIATION OF RETIRED FACULTY

*February 2020*





## **BARBECUE**

**FSU RESERVATION**

**WEDNESDAY**

**MARCH 11TH**

**11:30 AM**

**COST - \$10**

**SONNY'S BBQ**

## **SPRING LUNCHEON**

**TUESDAY - MAY 5TH**  
**ALUMNI CENTER BALL-**  
**ROOM, FSU**  
**11:00 A.M. SOCIAL**  
**NOON - LUNCH**  
**COST - \$25**



## **Front Cover Photo**

**FSU - Celebration for being ranked 18th among Public Universitys**

## FROM THE PRESIDENT

Time waits for no one! It does not seem possible that this is the final article I will write as President of ARF. I want to thank you for this wonderful experience of serving our association which is made up of a committed group of retired faculty and staff. In the year in which FSU ranked #18 in the national poll, we are so proud of the accomplishments of past and present members of this community—faculty, staff, administrators, students, and alumni—who made this possible.

Let me share with you a framed Story People quotation that is on the wall above my computer. The statement highlights my thoughts at this time:

*Someday, the light will shine like a sun through my skin and they will say,*

*What have you done with your life?*

*And though there are many moments I think I will remember; in the end, I will be proud to say, "I was one of us".*

Thank you for letting me be “one of us”. As I move into the Past President’s role in May, I will continue to support the efforts of ARF in providing for the retired faculty and staff of this great institution.

Your Board of Directors met in early January. We heard reports from Carolyn Shackelford and Max Carraway about the upcoming events: The Tour of The Grove on February 27; the spring Barbecue at the Seminole Reservation on March 11; and the spring Luncheon in the Alumni Center on May 5. We hope you will make reservations to attend these events—and bring your friends.

Many of us (don’t worry; you are not alone) experienced a Senior moment and forgot to pay membership dues for the year. Betty Serow reported she would send a mid-year reminder to about 30 former members informing them that their membership dues had not been paid yet. Since that reminder was mailed our treasurer has received several dues payments. Thank you; we trust you appreciate this gentle reminder.

Anne Rowe reported on the exceptional services provided by the FSU libraries last year and renovations of Strozier. The FSU Libraries recorded 1.8 million visits during last year. She reminded the Board retiree benefits through the faculty contract provide for an FSU ID card and library use for retired faculty. One must have an FSU email address in order to access the library facilities.

Calvin Zongker, as Historian, is putting together collections of photographs, sorted by decades, that depict ARF activities and events.

Thanks to our Friendship Committee (John and Jenny Bryant and Ivy Mitchell) who have kept in touch sick/injured members during this year. We appreciate their warm expressions of concern and encouragement. Our thanks to Tom and Esther Harrison who keep a record of our deceased colleagues for ARF Memorials.

### TABLE OF CONTENTS

President’s Message	1
Calendar of Events	2
In Memoriam	4
AROHE Report	5
Membership News	5
Friendship News	6
Barbeque Information	6
Spring luncheon Information	6
President-Elect	7
President’s State of the University	7
ARF helping S. Scholarship	10
Tribute to Max Carraway	12
Biltmore House	14
Past Presidents	21
ARF Board 2019-20	21

# FEBRUARY 2020

Our scholarship committee (Freddie Groomes-McLendon and Genevieve Scott) noted a special fundraising drive is being conducted by the Southern Scholarship Foundation at this time in memory of the first student (Enoch Hanna) enrolled in the program who recently died. Mr. Hanna was from Altha, FL and taught at Blountstown Elementary School for 35 years.

The Nominating Committee, chaired by Past President Jim Melton, met following the Board meeting. They will present a slate of officers for the 2020-2021 year. The membership will vote electronically prior to the May 5 Spring Luncheon at which time the new officers will be announced. In the event of committee vacancies, the President will make their appointments according to our Bylaws

Finally, the Board received with regret the resignation of Max Carraway as Special Advisor to the Board. Max has served ARF in many capacities, including President. His expertise as Special Advisor has been phenomenal. Max has provided staffing for so many events—luncheons, barbecue, tours, coordinating with University departments to produce and mail the Journal, etc. He will be sorely missed in this role—but he will continue his membership with ARF. Hats off to Max!!!!

Your Association is strong and will continue to be with your support. We hope to see you at the events in the spring... and hope you will encourage your retired colleagues to join us. ARF continues to provide rich opportunities for fellowship, learning, and laughter!



Nancy Turner  
ARF President 2019-20  
Retired Director of the  
Ogelsby Union 1974-2003

## RETIREE JOURNAL 2

## MASTER CALENDAR OF EVENTS Association of Retired Faculty The Florida State University 2019-2020

### Tour of Campus

Thursday - February 27, 2020  
Grove Museum - 10:00 a.m. -  
12:30p.m.

### Board of Directors

Tuesday- March 3, 2020  
2:00 p.m., Cottrell Conference Room  
FSU Alumni Center

### Barbecue

Wednesday - March 11, 2020  
FSU Seminole Reservation  
11:30 a.m.

### Spring Luncheon

Tuesday - May 5, 2020 Ball Room -  
Alumni Center 11:00  
a.m. Social; Noon - Lunch

### Joint Board Meeting

(Old and New Board)  
Tuesday - May 19, 2020 2:00 p.m. -  
Meeting, Cottrell Conference room 3:00  
p.m. - Reception, Pearl Tyner House  
FSU Alumni Center

### Exchange of Materials

May 19, 2020 - June 30, 2020 (Time for  
exchange of materials from old officers to  
new board members)

# ASSOCIATION OF RETIRED FACULTY MEMORIALS 2019-2020

## FEBRUARY 2020

IN MEMORIAM

WilShinichi Kinoshita May 1, 2019 (Faculty)  
 Eugene D. Nichols May 2, 2019 (Faculty)  
 Frank J. Crimbley May 6, 2019 (Staff)  
 Lillie Mae Landers May 6, 2019 (Staff)  
 Laura Blair Lang May 7, 2019 (Faculty)  
 Pamela Andrews May 11, 2019 (Faculty)  
 William Norsworthy, Jr. May 13, 2019 (Staff)  
 Teng Ma May 18, 2019 (Faculty)  
 "Sandy" D'Alemberte May 20, 2019 (President)  
 Barbara Carter Palmer June 6, 2019 (Faculty)  
 Dennis Slice June 13, 2019 (Faculty)  
 Ned Stucky-French June 28, 2019 (Faculty)  
 Lois Walker July 7, 2019 (Spouse/F)  
 Hans Peter Braendlin July 10, 2019 (Faculty)  
 Louie Malcolm Gandy July 10, 2019 (Spouse)  
 Charles R. Durbin July 19, 2019 (Staff)  
 Barbara White July 19, 2019 (Faculty/Dean)  
 John Robert Schrieffer July 27, 2019 (Faculty)  
 Elizabeth Ogburn July 29, 2019 (Faculty)  
 Anne Black July 30, 2019 (Faculty)  
 Marlene Guerrieri August 6, 2019 (Admin)  
 Beverly Waldron Pitts August 12, 2019 (Admin)  
 Robert V. Peirce August 12, 2019 (VP Admin)  
 Nicholas "Nick" Pappas Sept. 5, 2019 (Faculty)  
 Frances C. Cannon Sept. 7, 2019 (Faculty)  
 Robert Lee McCloud III Sept. 18, 2019 (Admin)

Donald L. Tucker Sept. 24, 2019 (Supporter)  
 Nancy Jean Burkman Sept. 30, 2019 (Wife/Fac)  
 William C. Rhodes October 5, 2019 (Faculty)  
 Judith K. Carnaghi October 6, 2019 (Wife/VP)  
 "Buck" Burkman Jr. October 7, 2019 (Faculty)  
 Mark Steven Goldman Oct. 14, 2019 (Faculty)  
 Robert Don Holt Nov. 11, 2019 (Admin)  
 Paul W. Strait Nov. 25, 2019 (Faculty)  
 Iris Turner Nov. 25, 2019 (Staff)  
 Beverly B. Spencer Nov. 28, 2019 (Admin)  
 Jessie Lovano-Kerr Dec. 18, 2019 (Faculty)  
 William F. McHugh Dec. 22, 2019 (Faculty)  
 Lisa Ann Scott Dec. 24, 2019 (Faculty)  
 Betty Taylor Erlandson Jan. 2, 2020 (Staff)  
 Joy Marie Tilley Jan. 8, 2020 (Staff)  
 G. "Jerry" O'Connor Jan. 12, 2020 (Faculty)  
 Charlotte A, Williams Jan. 13, 2020 (Faculty)  
 Richard Lee Shook Feb. 6, 2020 (Staff)



If any member learns of a death that does not appear in the Tallahassee Democrat, please let the Memorial chairs know about the death and their name will be added to our list.

Thank you,  
Tom & Esther

## RETIREE JOURNAL 3

## AROHE

by Carolyn Shackelford

### TRANSFORMING RETIREMENT

When you made the decision to retire, you might have felt like you were participating in a high-wire act without a net. At least that is a thought a retired therapist shared in some recent AROHE Highlights . If you are still experiencing moments of doubt or conflicting inner voices, you might find some resolutions at <https://tinyurl.com/y3hbqkrt>.

Five obstacles to happiness (and how to overcome them) are described in a book written by Mitch Abbett, PhD., *The Five Hurdles to Happiness*. To learn more about the five hurdles, go to <https://tinyurl.com/y5rfm5o3>.

An interesting program, Berkeley Home Match, was piloted last year by the UC Berkeley Retirement Center. This is a program that helps graduate students find low-cost housing by connecting them with university retirees who own homes near campus. Both parties can benefit financially from the arrangement, but it also offers an avenue for meaningful intergenerational relationships. A full report on the outcomes of the pilot can be found at: <https://tinyurl.com/yx-m4pt2j>.

On another note, AROHE reminds us that research shows that both active and passive cultural engagement in the arts can be antidotes to depression. In other words, a little culture is good for your mental health. At FSU, we have numerous and wonderful opportunities to observe and participate in artistic activities. I look forward to seeing you on campus.

## Membership News

Looking forward to seeing all of our members, new and renewing, at the BBQ.

As of January 2020, we have 137 paid member households for the 2019-2020 year, including 6 households that have renewed since the end of December in response to a reminder from the Membership Chair. At the end of the 18-19 year, we had 167 paid memberships.

Although many former members have moved away or died since last year, we have added several new members who have retired to Tallahassee after serving as faculty at other Universities around the country. Two of these are Drs. Don and Lori Murray who were faculty members at The University of Oklahoma.

Don't forget that our retired faculty association welcomes colleagues into its membership who have retired to Tallahassee from a senior institution of higher learning. Our bylaws state they "...shall be eligible for membership in the Association with all rights and privileges of membership. Spouses of such members are included in this eligibility". So if you know people that might be eligible for membership under this proviso, please let me know and I will invite them.

I can be reached at [bettyserow@yahoo.com](mailto:bettyserow@yahoo.com).



Betty Serow, Chair  
Membership Committee  
[bettyserow@yahoo.com](mailto:bettyserow@yahoo.com)

# Friendship News

As the Friendship Chairs of ARF, we contact our members, spouses, and their parents who are residing in Tallahassee when health issues arise.

We appreciate your help in contacting us, so we can send cards from ARF, make personal visits, or notify other members of our extended family to provide that special care.

If you know of anyone who needs our attention, please contact John or Jenny Bryant at (850) 385-6610 - email: vbryant42@me.com, or Ivy Mitchell at (850) 286-3026 - email: ivymitchell@comcast.net.



## Nominations:

### ARF Board of Directors

This year's Nominating Committee presents the following slate of nominees for officers for the coming academic year. Electronic voting by members will occur before the Spring Banquet.

President-Elect	Larry Gerber
Secretary	Jill Adams
Treasurer	Tom McCaleb
At-Large	Tom Knowles
At-Large	Ivy Mitchell

Carolyn Shackelford will assume the Office of President of the Association

Submitted by Jim Melton, ARF Past President/  
Nominating Committee Chair

## FEBRUARY 2020

### BARBECUE

**FSU RESERVATION  
WEDNESDAY  
MARCH 11TH  
11:30 AM  
COST - \$10  
SONNY'S BBQ**



### SPRING LUNCHEON

**TUESDAY - MAY 5TH  
ALUMNI CENTER BALL-  
ROOM, FSU  
11:00 A.M. SOCIAL  
NOON - LUNCH  
COST - \$25**



The Program Planning Committee reviewed the costs of the luncheons for Fall 2017, Spring 2018, and Fall 2018. The costs of the luncheons have exceeded the revenue received by \$500-\$700. The luncheon costs include more than the cost of the meal. The funding also provides parking services support in an easily accessible location, printed programs, an interesting program of speakers/performances, and a "meet and greet" reception providing wine and other beverages preceding the luncheon.

Therefore, the Program Planning Committee recommended to the Board that the cost of the luncheons be increased from \$22 per person to \$25 per person. This increase should reduce the deficit that is currently being incurred with each luncheon.

This recommendation for a slight price increase was approved unanimously by the ARF Board in its meeting on January 8, 2019.

## RETIREE JOURNAL 6

## From the President-Elect

One of the great benefits of ARF Membership is the opportunity to join former colleagues in enjoyable activities in great locations.

The next opportunity is on March 11, 2020, when our members gather for the annual barbeque at the beautiful FSU Seminole Reservation. Festivities begin at 11:30 a.m., when we will enjoy delicious food and an informative program. As a special treat we will welcome Dr. Lisa Liseno, Director, The Program for Instructional Excellency (PIE), and Dr. D. Craig Filar, Director, Office of National Fellowships. Both speakers have invited students to share some of their FSU experiences with us. Cost is only \$10.00 per person and reservations are required.

Our next activity is our Spring Luncheon scheduled for May 5, 2020, at the Alumni Conference Center. We gather to Meet and Greet at 11:00 a.m. Lunch is served at 12:00, followed by a presentation from Professor Terry Coonan, JD, Executive Director of the Center for the Advancement of Human Rights.

We hope that you will be able to join us at these activities



Carolyn Shackelford, ARF  
President Elect & National  
Liaison, AROHE  
cshack@centurylink.net

## Spring Luncheon Speaker



### Executive Director of the Center for the Advancement of Human Rights

Terry Coonan is an internationally known human rights lawyer who has advised U.S. judges on immigration and refugee law, worked with the United Nations

and the U.S. Justice Department, and litigated asylum and torture victim protection cases for more than two decades. He has done leading advocacy and policy work regarding human trafficking and has trained law enforcement, service providers and judges nationwide on the topic. Coonan serves as an associate professor in the College of Criminology and Criminal Justice and a courtesy professor in the FSU College of Law and the FSU Film School. He teaches courses on international human rights, human trafficking, refugee and asylum law, and human rights and film.

## State of the University

### President John Thrasher

Let's start by taking a look back at 2019.

It's been quite a year! The word that comes to my mind when thinking about it is achievement.

Everywhere we look, there are students, faculty and staff who are achieving at the highest levels. This culture of excellence is the reason why Florida State University is now recognized as the 18th best public university in America.

You know, when we first starting talking about reaching the U.S. News and World Report's Top 25, there were some people who didn't think we could do it. And they certainly didn't think we would break into the Top 20 — at least not this quickly.

But we did it, and we did it the right way: By developing a strategic plan that focuses on six goals that reflect the values of Florida State University.





Faculty, staff and administrators from across campus have been working hard for nearly five years to first develop a plan that would serve as our road map and then implement measurable benchmarks to ensure we are moving in the direction.

As a result, we are breaking new records and emerging as national leaders in every area of our plan: Entrepreneurship and Innovation; Academic and Research Excellence; Diversity and Inclusion; Student Success; and Excellence and Reputation.

## STUDENT SUCCESS

Our focus on student success has had the biggest impact on the rankings. Nearly every member of the campus community contributes to this goal in one way or another — but it's you, the faculty, who work most closely with our students and have the greatest and often the most lasting impact on their lives.

You are not only teaching in the classroom, many of you are helping students gain real-world, hands-on experience. You are teaching at our international study centers, overseeing internships, and directing undergraduate research and creative activity.

This past year, FSU became the largest university in the country to require students to have a transformative learning experience outside the classroom, and we couldn't do this without you.

I want to acknowledge and thank you for your dedication to teaching and creating a learning environment where all of our students can thrive.

The fact that you do this while also conducting research and pursuing creative endeavors and providing service to the university and the community is remarkable. Thank you, again, for all you do.

I also want to thank Provost Sally McRorie and her Academic Affairs team for guiding the university in our climb in the rankings. Her team is laser-focused on student success.

This is one reason why our four-year graduation rate is among the Top 10 in the nation and higher than any other public university in Florida.

And our 93 percent freshman retention rate ranks us in the Top 20 in the country. These excellent graduation and retention rates are driving our increase in the rankings.

And that's causing FSU to be increasingly popular among prospective students.

Applications for summer and fall admissions are already up 8 percent compared to this same point in time last year, so we might just break another record!

While another year of 60,000-plus applications speaks to the demand for an FSU education, let me reassure you that no one is looking to having another extra-large freshman class.

More and more, we are becoming the first choice for the very best students, which I hope is evident in your classrooms. We continue to adjust our admissions process to reflect this positive shift, and we are hoping to hold the line next fall at about 6,200 freshmen.

Graduate education is a hallmark of any great research university, and we are strategically growing our graduate and postgraduate populations. We have seen a 26 percent increase in the number of graduate applications since 2017, and graduate school enrollment this fall is at an all-time high.

I hope you've all had a chance to see the new "Grad-World FSU" website, which features videos of our graduate students and postdocs who come from all over the world to study here.

It's a great way to demonstrate our international reach and will help us attract the best and brightest prospective grad students from around the globe.



## ACADEMIC AND RESEARCH EXCELLENCE

In addition to teaching, you are also advancing our goal to strengthen FSU's academic and research excellence through your groundbreaking studies, original scholarship and creative endeavors.

This past fiscal year, FSU faculty researchers received nearly \$234 million from federal, state and private sources — a new university record. And the research you are doing is making a difference around the globe and in our own backyard.

In February, FSU was awarded \$8 million as part of a 10-year initiative to restore Apalachicola Bay and revive the region's endangered oyster industry.

And even closer to home, the College of Medicine opened the FSU Primary Health Center near Sabal Palm Elementary School where medical school faculty are providing needed care and services to an underserved community. Our faculty in the arts and humanities are also winning prestigious fellowships and awards and enriching our community with exhibitions and performances.

The work that Dr. Patrick Dunnigan and Dr. David Plack are doing with our Marching Chiefs is an excellent reflection of the College of Music and the quality of FSU's programs in the arts.

It was a proud day in FSU history to see the Marching Chiefs participate in the 75th anniversary D-Day parade in Normandy.

They were the only collegiate band in the United States to take part in these events, and they represented their country and their university well!

## ENTREPRENEURSHIP

FSU has made a lot of progress on the other goals outlined in our strategic plan as well. We made a big leap forward in our goal to strengthen our commitment to entrepreneurship and innovation when the Jim Moran School of Entrepreneurship became the Jim Moran College of Entrepreneurship — the nation's first stand-alone college of entrepreneurship!

This shows how the \$100 million gift from Jan Moran and The Jim Moran Foundation continues to transform our campus, and we continue to be grateful for their generosity.

That means we now have 17 colleges, and Susan Fiorito is our newest dean. And I couldn't be happier about that. Susan has built this college from the ground up and has overseen incredible growth since it opened its doors in fall 2017 with 80 students. Now, as a college, it has 760 students, 25 faculty and 11 staff members!

## DIVERSITY

Our strategic plan recognizes the value FSU places on diversity and inclusion. I'm proud to say that we have been named a national "Diversity Champion" and have received the top diversity in higher education award for six years in a row.

Increasing participation in intercultural activities also contributes to our goal of diversity and inclusion, and we are a leader in this area as well. This past year, nine faculty members received Fulbright awards, the second most in the nation. And we are 11th in the country for the number of students who study abroad.

Finally, the sixth goal of the strategic plan is to invest in our institution and our reputation. We have greatly increased our marketing efforts, and recently had a few robberies and other incidents that captured the attention of our students and their families.

FSU police responded by increasing officers and patrols around residence halls and other areas, and we were able to apprehend some of these suspects rather quickly.

in the coming year, we will focus on communicating our unique strengths to a broad audience. So, we've had a lot of success in 2019. But, of course, the year hasn't been without challenges.

We are still seeing some of our fraternities and sororities in the news for all the wrong reasons. In 2017, I suspended all Greek Life activities until we could develop new policies and procedures to support a healthier and safer environment. Those policies are now in place, and I believe a major culture shift is under way.

I can assure you, FSU will be unyielding in its efforts to punish those who cannot abide by the rules and do not put the health and safety of their members and pledges first.

I'm also very concerned about crime in Tallahassee, particularly when it affects our campus. We recently had a few robberies and other incidents that captured the attention of our students and their families.

FSU police responded by increasing officers and patrols around residence halls and other areas, and we were able to apprehend some of these suspects rather quickly.

Someone once asked me what keeps me up at night — and it's not the football coach, believe me.

And, by the way, for those who have been following this saga — we will have some news soon, but you're going to have to hold on a little while longer.

But, back to the question — it's crime in our community that I worry about the most. Florida State wants to be part of the solution, but we need everyone in Tallahassee to pull together to address the issue.

Everyone deserves to feel safe, and parents want to have peace of mind when they send their kids to study at one of our city's three institutions of higher education.

So, those are a few of the challenges we face, but the year ahead also provides us with opportunities to build on our tremendous success.

After shattering our goal of becoming a Top 25 public university, now is not the time to rest on our laurels. That's not who we are at Florida State.

It's been said that high achievement always takes place in the framework of high expectation. So the Top 15 is in our sights, and the Top 10 is a long-range goal. But it's going to take significant support from the Florida Legislature to make it happen.

That's because the competition at this level is fierce, and many states are investing heavily in their leading institutions in order to keep them at the top. You'd better believe no one wants to backslide, and neither do we!

The fact that we have moved up faster than any other university in the Top 50 bodes well for the 2020 Legislative session, which begins January 14.

I've been meeting with a number of legislators already, and I'm very optimistic about this session. Our legislators understand the importance of higher education for the state, and they know FSU, in particular, provides a good return on investment.

We are asking the Legislature for funding that will allow us to continue to hire nationally recognized faculty, improve our faculty-student ratio and enrich Florida's talent pipeline.

And we're asking legislators to provide the resources we need to give the hard-working faculty who are already here the recognition they deserve.

One of my top priorities is to secure funding for the new College of Business Building and an Interdisciplinary Research and Commercialization Building so that we can break ground on these facilities in the coming year.

# FEBRUARY 2020

And, once again, a bill has been filed that would allow people with concealed weapons licenses to carry guns on college campuses.

I have fought against this effort for many years, and I will make my annual pledge to you that I will continue to fight against guns on campus. Florida State University is a special place, and I will do everything I can to protect the diverse, supportive and collegial atmosphere we have here.

2019 was an especially good year for FSU. We achieved unprecedented success by moving forward together and using our strategic plan to guide our way.

From academic and research excellence to entrepreneurship and innovation, from student success to diversity and inclusion — everything we have accomplished has further enhanced our reputation of excellence.

I want to thank you all for the support you've shown me over the past five years. I'm looking forward to continuing to work with you to reach even higher and achieve even more in 2020.

Thank you.



## Southern Scholarship Foundation Residents Thankful for ARF

Since 1955, the Southern Scholarship Foundation (SSF) has helped thousands of students with outstanding academic abilities, good character, and financial need realize their dream of a college education. Students receive scholarships in the form of rent-free cooperative-living housing valued at \$13,000 a year. SSF residents live in furnished scholarship houses that are adjacent to their college campus where they share chores, meals, and rooms. Officers within the house learn financial management, leadership, and collaboration. Currently, SSF serves 470 students in the state of Florida.

SSF began in Tallahassee with the help of Dr. Mode Stone, former Dean of the FSU College of Education. Dr. Stone and his associates witnessed hundreds of top high school graduates who did not consider college an option due to a lack of financial resources. Many, like Dr. Stone, came from rural, hardworking, farming families. Dean Stone and other FSU professors and local business leaders banded together to acquire the first scholarship house. Currently rent-free housing is available to students who attend Florida State University, Florida A&M University, University of Florida, Tallahassee Community College, Santa Fe College, Florida Gulf Coast University, and Flagler College Tallahassee.

The Association of Retired Faculty have partnered with SSF since 2005. Last fall, the association's members donated cleaning products, paper products and nonperishable food items. After the meeting, SSF President Shawn Woodin and Director of Development Kristie Teal each left with a packed car!

SSF holds a Thanksgiving Potluck in which residents cook turkeys, hams, and all the trimmings! This event also recognized graduating residents. To keep the event lively, SSF packaged all ARF members' donated goods into six baskets and awarded the goodies during the Thanksgiving potluck, just the perfect addition to the celebration. SSF and its residents have much to be thankful for.

SSF makes college affordable. In 2019, 70% of residents who left SSF graduated or continued their education elsewhere, 43% reported they would not be able to attend college without SSF, and 61% graduated with \$0 student debt. While 90% of Southern Scholarship recipients are Floridians, some come from all parts of the country and abroad. SSF students are between 18-25, 46% are first generation colleges students, 75% are minorities, and over 50% are women.

Most recently in Tallahassee, SSF welcomed 17 students to the new Bill and Nancy Malthouse Scholarship House thanks to a substantial gift made by SSF alum Bill Malthouse. The twenty-sixth SSF house in the State of Florida, the construction marks a significant milestone for the organization since it is the first house fully funded by an alumnus. "SSF creates a community and family," said Roberto Vasquez, House Manager for the Malthouse Scholarship House, and an SSF resident since 2017. "Living at SSF has made my education at FSU possible by saving me thousands of dollars and helped me grow as a leader. Without SSF, I could not have gone to college.

For more information contact Kristie Teal, Development Director [kteal@southernscholarship.org](mailto:kteal@southernscholarship.org).



**The new Bill and Nancy Malthouse Scholarship House built for the Southern Scholarship Foundation**



**Florida State University President, John Thrasher greeting a Southern Scholarship Foundation Student.**



**Thanksgiving at the Southern Scholarship Foundation**

## Maxwell “Max” Carraway, Jr. ARF President and later “Special Advisor”

by Tom Hart

### ARF President 2009-2010



WITH SINCERE APPRECIATION...

...to Max Carraway who is retiring from his Board position as Special Advisor to the ARF Board. Max retired from the university in 2003 as the university's registrar emeritus.

Upon his retirement, Max became involved with the Association of Retired Faculty. He served in several board positions prior to becoming Vice President in 2008-09 and then President in 2009-10. During his tenure on the Board, he worked closely with the Office of University Relations to develop the program of Docents for the President's House which opened in 2007. The Docents are trained in the history of the house, contents, and the donors who have contributed to this project.

Since he completed his service as Past President, Max has served on the Board as Special Advisor. In this role, he has been liaison to the Office of the President, the Provost, and the Vice President for Faculty Development and Advancement. He manages many of the details of the publications related to printing and mailing; he obtains mailing lists for newly retired faculty and Administrative staff; prepares with the officers the calendars for the year; drafts of programs and agendas; and other needed items.

Max has provided extraordinary support to the entire Board and the work that it does to serve the membership. We want to extend our hearty thanks to him and wish him a relaxing retirement!

September 2013



# ARF STARS

September 2015

## Spring Luncheon



**Max Carraway**

Registrar emeritus receives  
'Volunteer of the Year' honor



Larry Gerber, Walter Moore & Max  
Carraway



## Biltmore Estate History

by Tom Hart



In the late 1880s, George W. Vanderbilt, then a young man of 25, came upon the perfect spot in North Carolina's Blue Ridge Mountains for a 250-room French Renaissance chateau to be built by his friend, architect Richard Morris Hunt. The great chateau would be called "Biltmore." Formal and informal gardens were designed by renowned American landscape architect, Frederick Law Olmsted (Central Park in New York City & the U.S. Capitol Grounds). The original acreage of Biltmore Estate was approximately 125,000 acres and included property later sold to the federal government to create Pisgah National Forest, one of the first national forests east of the Mississippi. Currently the estate covers approximately 8,000 acres. Much of the original land was depleted because the pioneers did not rotate crops.

### George Washington Vanderbilt II



(November 14, 1862 – March 6, 1914) was an art collector and member of the prominent Vanderbilt family, which amassed a huge fortune through steamboats, railroads, and various business enterprises. He built a 250-room mansion, the largest privately owned home in the United States, which he named Biltmore Estate.

George W. Vanderbilt was the youngest child of William Henry Vanderbilt and Maria Louisa Kissam. Though there is no evidence to suggest that he referred to himself using a numerical suffix during his life, various sources have called him both George Washington Vanderbilt II and III throughout time.

As the youngest of William's children, George was said to be his father's favorite and his constant companion. Relatives described him as slender, dark-haired, and pale-complexioned. Shy and introverted, his interests ran to philosophy, books, and the collection of paintings in his father's large art gallery. He acquired a private library of more than twenty thousand volumes.

## Vanderbilt Family

### Cornelius Vanderbilt



(May 27, 1794 – January 4, 1877) was an American business magnate who built his wealth in railroads and shipping. After working with his father's business, Vanderbilt worked his way into leadership positions in the inland water trade and invested in the rapidly growing railroad industry.

He began working on his father's ferry in New York Harbor as a boy, quitting school at the age of 11. At the age of 16, Vanderbilt decided to start his own ferry service. He got half of the profits from a periauger (a shallow draft, two-masted sailing vessel), which he christened the Swiftsure. A ferry entrepreneur, Thomas Gibbons asked Vanderbilt to captain his steamboat between New Jersey and New York. He eventually started his own ferry service.



© Vanderbilt, Hudson River steamer owned by Cornelius Vanderbilt (oil on canvas by James and John Flaxell)

As one of the richest Americans in history and wealthiest figures overall, Vanderbilt was the patriarch of the wealthy and influential Vanderbilt family. He provided the initial gift to found Vanderbilt University in Nashville, Tennessee. "Contemporaries, too, often hated or feared Vanderbilt or at least considered him an unmannered brute. While Vanderbilt could be a rascal, combative and cunning, he was much more a builder than a wrecker [...] being honorable, shrewd, and hard-working."

Cornelius Vanderbilt remained a member of the Moravian Church to his death.

### William Henry "Billy" Vanderbilt



(May 8, 1821 – December 8, 1885) was an American businessman and philanthropist. He was the eldest son of Commodore Cornelius Vanderbilt, an heir to his fortune. He became the richest American after he took over his father's fortune in 1877.

He passed on a substantial part of the fortune to his wife and children, particularly to his sons Cornelius II and William. He inherited nearly \$100 million from his father. The fortune had doubled when he died less than nine years later.



# FEBRUARY 2020

Visitor's Center at Biltmore House. You arrive here and obtain your pre-arranged tickets.



We visited the Biltmore Conservatory & Greenhouses. They were incredible.



Gift shop at Biltmore House.



Scenes from the beautiful rooms in the Biltmore House for the "Candle Light Tour".



# FEBRUARY 2020

Banquet Hall is the largest room in the house, measuring 42 feet wide and 72 feet long, with a 70-foot-high barrel-vaulted ceiling. The table could seat 64 guests surrounded by rare Flemish tapestries and a triple fireplace that spans one end of the hall. On the opposite end of the hall is an organ gallery that houses a 1916 Skinner pipe organ.



Biltmore Hotel Entrance & Lobby.



Biltmore was just occupied in the Summer & Christmas. For the dining room there are 1,139 linen napkins and 111 linen tablecloths in inventory. The table was spread with more than 40 pieces of delicate porcelain, exquisite silver, and sparkling crystal per guest. Dinner featured between six and ten courses, including soup, fish, entrée, roast or relevé, game and salad, dessert, and coffee to aid digestion.

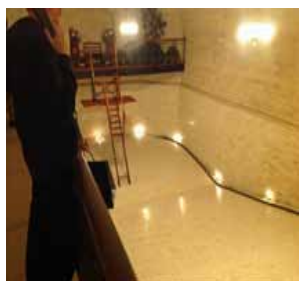


# FEBRUARY 2020

My meal at the Biltmore Hotel in the Library dining area. I had Kiwi Sorbet.



Day tour of the lower level of Biltmore House. The Swimming Pool, Billiard Room, canned storage & Kitchen Area.



A few displays from the Downton Abbey Exhibit at Biltmore House Village.



Downton Abbey Exhibit 1



Clothes at the Downton Abbey Exhibit at Biltmore House Village.



Downton Abbey servants area exhibit.



Downton Abbey Exhibit, the main floor of the House.



**BARBECUE**

**FSU RESERVATION**

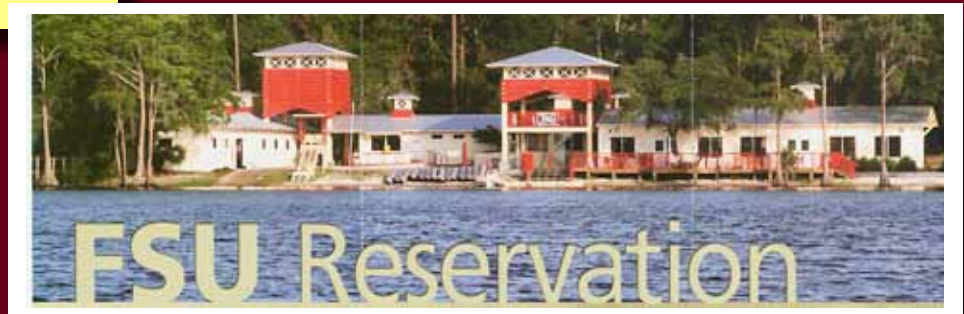
**WEDNESDAY**

**MARCH 11TH**

**11:30 AM**

**COST - \$10**

**SONNY'S BBQ**



**SPRING LUNCHEON**

**TUESDAY - MAY 5TH**  
**ALUMNI CENTER BALL-**  
**ROOM, FSU**  
**11:00 A.M. SOCIAL**  
**NOON - LUNCH**  
**COST - \$25**



*Florida State*

# ARF Membership Policy

Effective with the by-laws that were adopted two years ago, ARF's fiscal year is now defined as June 1-May 31. New memberships and membership renewals received anytime between these dates apply only to the current fiscal year. For example, if you paid membership dues anytime during our 2019-2020 fiscal year (June 1, 2019 through May 31, 2020) then your membership was valid until June 1, 2020. For membership during fiscal year 2020--2021, dues have to be paid on or after June 1, 2019.

Because our accounting system is not very sophisticated, based as it is on a simple Excel spreadsheet, it is not possible to accept new memberships or renewals for the next fiscal year in advance. In other words, you will not be able to join ARF for 2019-2020 or renew your membership for 2020-2021 prior to June 1, 2020.

This raises the issue of members who make multiple payments during the year. Because of the above policy on advance renewals, these overpayments cannot be applied to the following fiscal year. A number of years ago, the ARF Board addressed the question of overpayments and multiple payments during a fiscal year,

The Board adopted a policy against refunding overpayments or multiple payments of membership dues. This decision was made because of the accounting challenges involved given our simple accounting system and the mailing costs. Instead these overpayments and multiple payments are treated as donations to ARF. Keep in mind, however, that because we are not a 501(c) organization, these donations are not tax-deductible.

If you are ever in doubt as to whether you have paid dues for the current year, please do not hesitate to contact me by email to inquire. It takes very little time and effort on my part to check your status and to respond to you, and unless I am out of town and away from my records, I will respond quite promptly. My email address is [tmccaleb@fsu.edu](mailto:tmccaleb@fsu.edu), and I'm always happy to hear from you and to answer any questions or address any problems you might have about ARF. While I prefer to communicate by email, for those members not having access to email, my telephone number is (850) 933-7653.

## CONTRIBUTIONS

You may use this form to contribute to the Scholarship Funds.

Name \_\_\_\_\_

Address \_\_\_\_\_

\_\_\_\_\_

Telephone \_\_\_\_\_

E-mail Address \_\_\_\_\_

ARF encourages our members to make voluntary contributions to the Southern Scholarship Foundation or the Bernard Sliger Presidential Scholarship Fund. Complete this Form and make a check out to the FSU Foundation and note SSF, or the Sliger Scholarship Fund in the subject line at the lower left of the check. Mail check to:

Tom McCaleb  
3037 Godfrey Place  
Tallahassee, FL 32309-2115

---

### **ARF DUES/EVENT PURCHASE**

Use this form to pay your ARF dues and to purchase tickets for BBQ - \$10 person and Spring Luncheon - \$25 person. Dues are \$10 person and \$15 per household.

Name \_\_\_\_\_

#### **PAYMENT**

Address \_\_\_\_\_

#### **Amount**

\_\_\_\_\_  
\_\_\_\_\_

**ARF Dues:** \$15 per household/\$10 per person

Telephone \_\_\_\_\_

**BBQ** - \$10 per person \_\_\_\_\_

E-mail Address \_\_\_\_\_

**Spring Luncheon** - \$25 per person \_\_\_\_\_

**TOTAL ENCLOSED:** \$ \_\_\_\_\_

Special Dietary Needs \_\_\_\_\_

Make check payable to "ARF". Send form and payment to:

Tom McCaleb  
3037 Godfrey Place  
Tallahassee, FL 32309-2115



*For the August issue  
of the  
ARF Journal,  
please submit your publications  
and professional activities by  
June 15, 2020  
to: thart@fsu.edu*

This issue of the ARF Journal continues a new era. We coordinate with the FSU Printing Department Staff to make sure the Journal is current in appearance.

We are also continuing to include photos of Officers and Committee Chairs with their articles. These features have been added to help with any historical research in the future, since this information is added to our Website for each issue.



**Editor - Tom Hart**  
Professor Emeritus  
College of Information

## Directory

### PAST Presidents

1979-80 Griffith Pugh\*  
1980-81 Virgil Strickland\*  
1981-82 Frank Allen\*  
1982-83 Jack Swartz\*  
1983-84 Fay Kirtland\*  
1984-85 Claude Flory\*  
1985-86 Sara Srygley\*  
1986-87 Ivan Johnson\*  
1987-88 Janet Wells  
1988-89 Wiley Housewright\*  
1989-90 Tom Lewis\*  
1990-91 Daisy Flory\*  
1991-92 Maurice Vance\*  
1992-93 Ruth Rockwood\*  
1993-94 Gene Tanzy\*  
1994-95 Jessie Warden\*  
1995-96 Jack Swartz\*  
1996-97 Katherine Hoffman  
1997-98 Heinz Luebkekmann  
1998-99 Julia Goldstein\*  
1999-00 Gideon Jones  
2000-01 Betty Piccard\*  
2001-02 Bob Spivey  
2002-03 Jane Love\*  
2003-04 Wayne Schroeder  
2004-05 Nancy Smith Fichter  
2005-06 Calvin Zongker  
2006-07 Fanchon Funk  
2007-08 Fred Standley\*  
2008-09 Marie Cowart  
2009-10 Max Carraway  
2010-11 Sandra Rackley  
2011-12 De Witt Sumners  
2012-13 Tonya Harris  
2013-14 Anne Rowe  
2014-15 Leo Sandon  
2015-16 Carol Darling  
2016-17 Betty Lou Joanos  
2017-18 Walter Moore  
2018-19 James "Jim" Melton  
\* - Deceased

### Board 2019-2020

#### President

Nancy Turner \*  
1514 Avondale Way  
Tallahassee, Fl. 32317  
Home: (850)656-6284  
goldennat@comcast.net

#### Past President

James "Jim" Melton \*  
4436 Meandering Way #A108  
Tallahassee, Fl. 32308  
(850) 980-2242  
melton2757@comcast.net

#### President Elect & National Liaison, AROHE

Carolyn Shackelford\*  
3938 Meandering Lane  
Tallahassee, Fl. 32308  
Home: (850)878-4469  
cshack@centurylink.net

#### Secretary

Jill Adams \*  
765 Eagle View Dr.  
Tallahassee, FL. 32311  
Home: (850)224-0865  
Cell: (850)345-7517  
jgadams@fsu.edu

#### Treasurer

Tom McCaleb \*  
3037 Godfrey Place  
Tallahassee, Fl. 32309-2115  
(850) 933-7653  
tmccaleb@fsu.edu

#### Member at Large

Larry Gerber\*  
643 Violet Street  
Tallahassee, Fl. 32308  
Home: (850)284-5612  
lgerber@fsu.edu

#### Member at Large

Tom Knowles ^  
1826 Aaron Road  
Tallahassee, Fl. 32303  
Home: (850)385-7663  
tomk1826@comcast.net

### Committee Appointments

#### Editor-RETIREE JOURNAL

Tom Hart  
2656 Egret Lane  
Tallahassee, Fl. 32308  
(850) 385-7550  
thart@fsu.edu

#### Membership

Betty Serow  
3513 Willow Springs Lane  
Tallahassee, FL 32312  
Home: (850) 893-5522  
bettyserow@yahoo.com

#### Scholarship Chairs

Freddie Groomes-McLendon  
3306 Wheatley Road  
Tallahassee, Fl 32305  
(850) 294-0992  
mclen3306@aol.com

Genevieve Scott  
112 Winn Cay Drive  
Tallahassee, Fl 32312  
(850) 385-8807  
gscott@fsu.edu

#### Liaison to FSU Library

Anne Rowe  
3727 Bobbin Brook Way  
Tallahassee, Fl. 32312  
(850) 893-2464  
arowe@admin.fsu.edu

#### Historian/Archivist

Calvin Zongker  
601 Live Oak Plantation Road  
Tallahassee, FL. 32312-2334  
Home: (850) 385-4848  
czongker@fsu.edu

#### Friendship

Jenny Bryant  
3005 Brandemere Drive  
Tallahassee, FL 32312  
(850) 385-6610  
Cell: (850) 294-2219  
vbryant42@me.com

#### John Bryant

3005 Brandemere Drive  
Tallahassee, FL 32312  
(850) 385-6610  
Cell: (850) 294-2011  
jbry98@comcast.net

#### Ivy Mitchell

2307 Vincent Dr.  
Tallahassee, FL 32303  
(850) 286-3026  
ivymitchell@comcast.net

#### Memorials

Tom Harrison  
2107 Rankin Avenue  
Tallahassee, Fl. 32310  
(850) 576-4271  
tharrison@fsu.edu

#### Esther Harrison

2107 Rankin Avenue  
Tallahassee, Fl. 32310  
(850) 576-4271  
tharrison@fsu.edu

#### Special Advisor

Max Carraway  
317 Arden Rd.  
Tallahassee, Fl. 32305  
(850) 877-7010  
mcarraway@fsu.edu

#### ARF Past Presidents Council, Chair

Carol Darling  
3301 Reading Lane  
Tallahassee, Fl. 32312  
Home: (850)386-4399  
cdarling@fsu.edu

#### AROHE APPOINTMENT

Fanchon "Fancy" Funk  
4133 Diplomacy Circle  
Tallahassee, Fl. 32308  
Home: (850)575-7908  
Cell (850)545-8495  
ffunk@fsu.edu

#### \* Elected by Membership

Provost's Office  
Florida State University  
212 Westcott Building  
Tallahassee, FL 32306-1480

**Return Service Requested**



**ARF RETIREE JOURNAL**  
**February 2020**



WEBSITE - <http://retiredfaculty.fsu.edu>

**NON-PROFIT**  
**U.S. Postage**  
**PAID**  
**Tallahassee, FL**  
**Permit No. 55**